

# BCL

Measurement device for blast chilling

---

# BCL



---

ioLiving BCL measurement device is designed for monitoring the blast chilling event temperature. Blast chilling is a method of cooling food quickly to a low temperature that is safe from bacterial growth. After the blast chilling the food or half-finished food is safe for storage and later consumption.

Measurement range:                   -10 °C ... +100 °C  
Measurement accuracy:               ± 0.2 °C  
Resolution:                               0.1 °C

Works with two interchangeable AA Lithium batteries.  
The battery life is about 5 months if the device is switched on all the time. It is recommended to turn off the device when not in use.



## USING THE IOLIVING BCL MEASUREMENT DEVICE

### The purpose of use

BCL is designed to be used in following situations:

- Monitoring the temperature profile of the blast chilling event
- Monitoring the result of the blast chilling event
- Storing the blast chilling data in the ioLiving cloud service

### Preconditions

1. Use of the BCL device requires the purchase and activation of an ioLiving license.
2. Activate the device on your ioLiving account.
3. Set the blast chilling temperature limits. The upper measurement limit indicates what temperature must be reached for the measurement to start. The lower measurement limit indicates what temperature must be reached for the cooling to be interpreted as successful. Set the time limit for blast chilling event as well.

### Optional phase

4. Create the blast chilling groups and objects.

### Making the blast chilling measurement

1. Turn on the device.
2. Place the measurement pin in the food to be blast chilled.  
When the pin temperature reaches the higher limit set on the ioLiving account, blast chilling temperature monitoring starts automatically.
3. The temperature profile and the result of the blast chilling event are stored in the service.
4. After the measurement, remove the pin from the food and clean it properly.
5. Turn off the device at the power switch.

### Optional way

1. Turn on the device.
2. Sign in to your ioLiving account.
3. Place the measurement pin in the food to be blast chilled.  
When the pin temperature reaches the higher limit set on the ioLiving account, blast chilling temperature monitoring starts automatically.
4. When the blast chilling measurement has started in the service, select the correct group, object and a person who is making the measurement. A comment can also be saved in the service.
5. In addition to this information, the temperature profile and the result of the blast chilling event are stored in the service.
6. After the measurement, remove the pin from the food and clean it properly.
7. Turn off the device at the power switch.

## How the measurement appears in the service

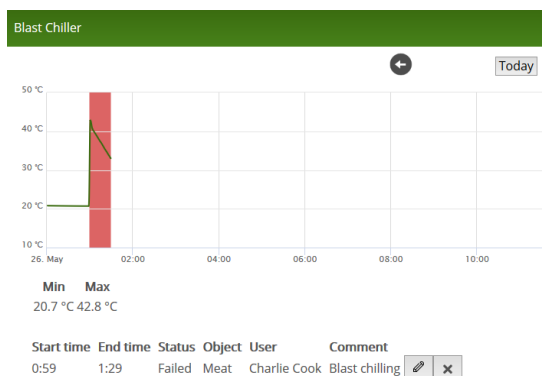
Figure 1.  
Ongoing blast chilling event is marked with blue color in the service.



Figure 2.  
The Successful blast chilling event is marked with green color.



Figure 3.  
Failed blast chilling event is marked with red color.



The material in this manual is for informational purposes only. The products it describes are subject to change without prior notice, due to the manufacturer's continuous development program. ioLiving Inc./Ceruus Inc. makes no representations or warranties with respect to this manual. ioLiving Inc./Ceruus Inc. shall not be liable for any damages, losses, costs or expenses, direct, indirect or incidental, consequential or special, arising out of, or related to the use of this material or the products described herein..